

ES04A -Teach About Earth's Features

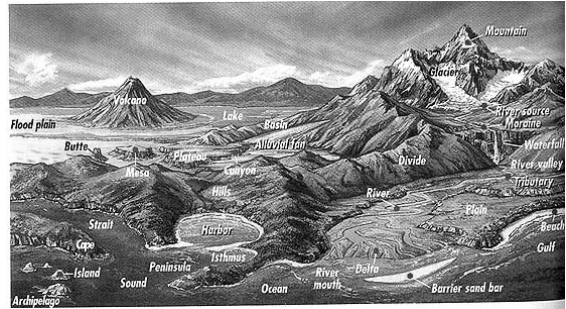
Use with BrishLab PS04A
Done By: Coach

[Image Link](#)

1- How can we describe Earth's features?

Page 1

Para 3



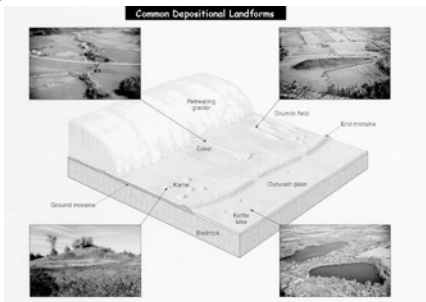
We can define mountains, rivers etc by general categories.

[Image Link](#)

2- What creates the different features on land and on the ocean floor?

Page 1

Para 4



Water and gravity shape the land through erosion and deposition.

[Image Link](#)

3- Name two reasons that we study land formation.

Page 1

Para 5



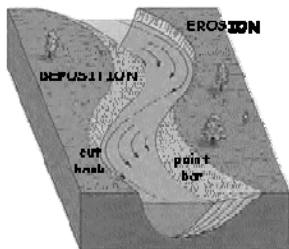
We filter drinking water through surface soil and build homes too.

[Image Link](#)

4- How can water be both a constructive and destructive force in land?

Page 1

Para 6



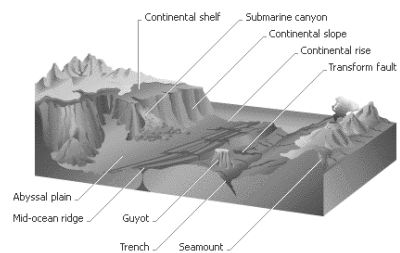
If material is removed, erosion happens.
If material is built up, deposition builds new land.

[Image Link](#)

5- Describe two parts of the ocean floor.

Page 1

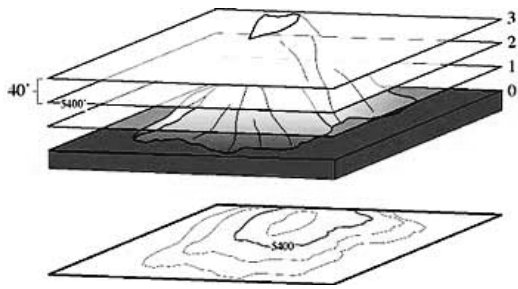
Para 8



The continental shelf falls off onto the deep ocean basin.

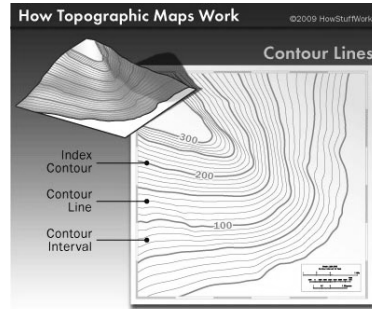
[Image Link](#)

6- How is a topographic map like a loaf of bread? Page 2
Para 10



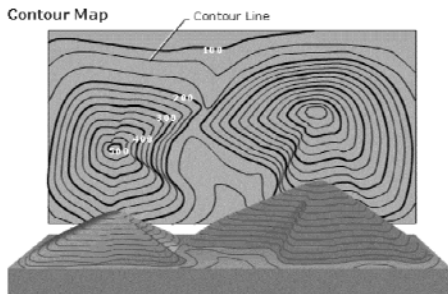
Mountains are 'sliced' into sections with the same distance from sea level - just like sliced bread. [Image Link](#)

7- What does the contour interval tell you about the map? Page 2
Para 11



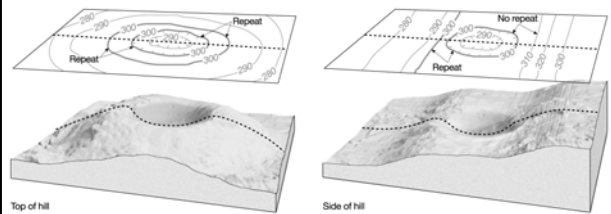
The contour interval is the distance between any two contour lines. [Image Link](#)

8- How can you tell a mountain is very steep on a topographic map? Page 2
Para 12



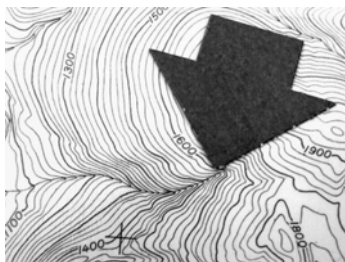
Lines near each other indicate a steep slope while lines further apart are a gentler slope. [Image Link](#)

9- What is the difference between a hill and a depression on a topographic map? Page 2
Para 13



A depression has hachure marks pointing down. [Image Link](#)

10- What are two features shown on a map that involve rivers or streams? Page 2
Para 15



A "V" shape to the contour lines pointing uphill as well as a labeled feature indicate a stream or a stream bed. [Image Link](#)

Draw and color a topographic map showing a river, hill and stream,

